



38 Nursery Gardens

, Yarm, TS15 9UY

£165,000



38 Nursery Gardens

, Yarm, TS15 9UY

£165,000



Entrance

4'0" × 4'0" (1.24m × 1.22m)

Enter through a uPVC door to the entrance, which leads to the living room.

Living Room

14'2" × 12'9" (4.32m × 3.89m)

Retreat to this spacious living room, where comfort meets style. The soothing grey walls create a calming backdrop for life's quiet moments, while the elegant fireplace serves as both a cosy focal point and a gathering spot on chilly evenings. Large front-facing windows welcome natural light, making this the kind of room that beckons you to kick off your shoes, sink into your favourite spot, and let the day melt away.

Kitchen

6'11" × 12'8" (2.12 × 3.87)

Step into a sleek, contemporary kitchen where high-gloss white cabinets catch the light at every angle. Elegant marble-effect countertops sweep across both wall-mounted and base units, creating the perfect stage for your culinary adventures. There's a dedicated space for your cooker, and the practical lino flooring means you won't have to stress about those inevitable cooking spills. A radiator keeps the space cosy year-round.

Sunroom

12'2" × 10'11" (3.71 × 3.35)

The sunroom stretches out like a glass-wrapped sanctuary, where walls of windows rise from floor to ceiling, inviting streams of natural light to dance across the tiles below.

Bathroom

4'10" × 9'7" (1.48 × 2.93)

Step into a sleek bathroom where gleaming white fixtures catch the eye. A versatile shower-bath combo anchors the space, while floor-to-ceiling tiles add a touch of modern elegance. And because life's little necessities need a home too, there's a handy storage cupboard to keep everything neat and tidy.

Master Bedroom

8'5" × 12'7" (2.59 × 3.86)

Sunlight streams through the window of the master bedroom, which sits at the front of the house like a welcoming retreat. There's enough room to stretch out here – you could fit a king-size bed and still have space for that vintage dresser you've been eyeing. The carpet feels great underfoot, and the radiator keeps things cosy when winter rolls around.

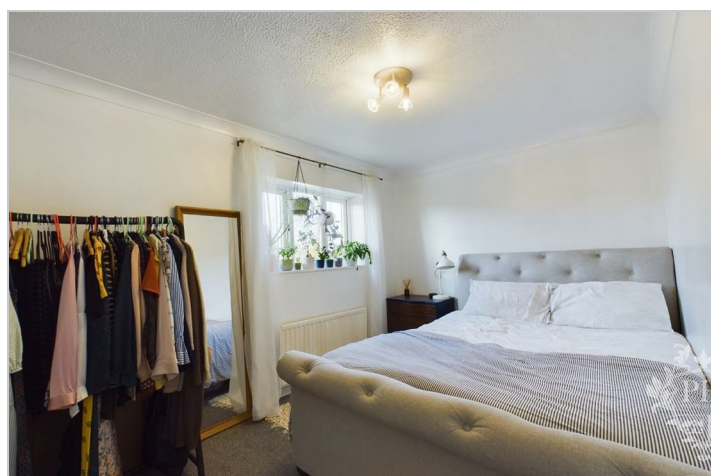
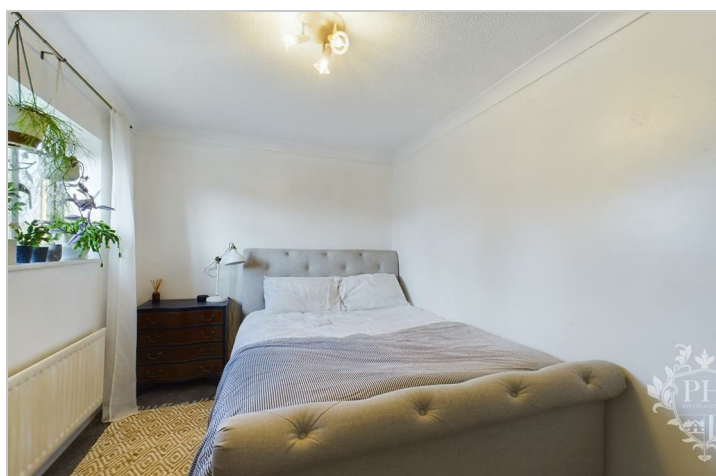
Bedroom Two

6'11" × 12'8" (2.12 × 3.87)

Tucked away at the back of the house, you'll find a versatile room that's currently set up as a home office but could easily transform into a cosy second bedroom. There's plenty of space for a double bed and your furniture, plus a clever built-in cupboard that doubles as the boiler's home base.

Rear Garden

Behind the house, you'll find a cosy slice of outdoor space – a practical gravel parking spot nestled alongside a patch of green that's perfect for a morning coffee or an evening breeze.



Road Map



Hybrid Map



Terrain Map



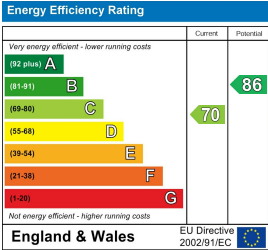
Floor Plan



Viewing

Please contact our Middlesbrough Office on 01642 462153 if you wish to arrange a viewing appointment for this property or require further information.

Energy Efficiency Graph



These particulars, whilst believed to be accurate are set out as a general outline only for guidance and do not constitute any part of an offer or contract. Intending purchasers should not rely on them as statements of representation of fact, but must satisfy themselves by inspection or otherwise as to their accuracy. No person in this firms employment has the authority to make or give any representation or warranty in respect of the property.